

The MATSIL program is a collaborative project between
The Southern Baptist Theological Seminary and the
International Centre for Excellence in Leadership



The Southern Baptist
Theological Seminary
WWW.SBTS.EDU

International Centre
for Excellence in Leadership



www.icelonline.com

For more information on the
MATSIL program, please visit the
International Centre for
Excellence in Leadership website:
www.icelonline.com

Here you will find links to more current
information regarding the required courses
and program details.

For admissions information,
please see The Southern Baptist
Theological Seminary website:
www.sbts.edu/admissions

If you have further questions, contact:
matsil@sbts.edu

FOR THE TRUTH • FOR THE CHURCH • FOR THE WORLD



FOR THE GLORY OF GOD



The Southern Baptist
Theological Seminary

MASTER OF ARTS IN
THEOLOGICAL STUDIES
INTERCULTURAL
LEADERSHIP

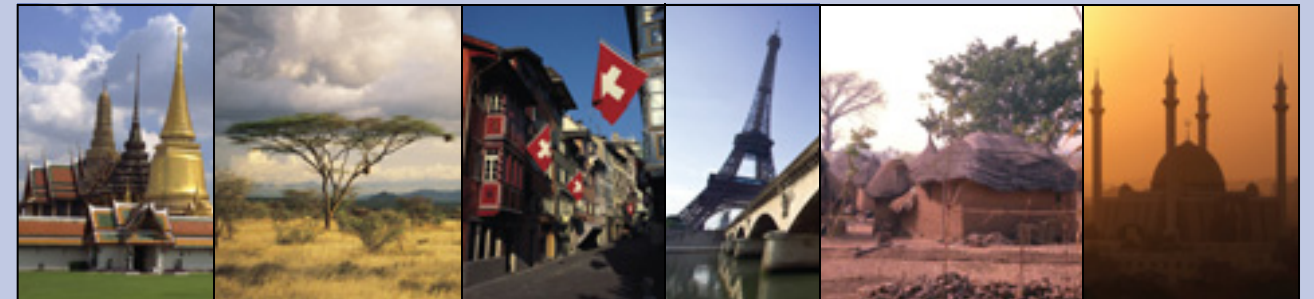
Enrich your cross-cultural career!

The MATSIL program seeks to prepare men and women for living and ministering in a pluralistic and multicultural 21st century world. Students will be prepared to recognize and understand their own worldviews and cultures as well as the worldviews and cultures of others.

The MATSIL program is intended to prepare students for working in diverse cultures through the study of anthropology, intercultural communication, theology, church history, missiology, leadership, evangelism, church planting, biblical studies, and world religions.

Students serving with the International Mission Board are eligible to take some courses that incorporate materials from the International Centre for Excellence in Leadership, IMB Field Personnel Orientation, and field training opportunities.

Twenty-four hours required for the MATSIL program must be completed on The Southern Baptist Theological Seminary's campus in Louisville, Kentucky (per accreditation requirements). The remaining half of the hours may come from a variety of sources, including online classes, field intensives, and transfer credits.



Requirements

A bachelor's or master's degree from an accredited institution.

- Employment by IMB, NAMB, or other Great Commission sending agency. Prior to appointment, a student may enroll as a "MATSIL special student" and take a maximum of 20 hours in this status. In the "special" status, students do not receive the 50% MATSIL tuition discount (see below).

- IMB Journeymen, ISC personnel, and NAMB Mission Service Corps personnel must be committed to long-term service in order to be considered for the MATSIL program. These IMB personnel must be approved for the program by the IMB's Team Leader for the ISC/Journeyman/Masters Programs. These NAMB personnel must be approved by NAMB's Director of the Missionary Deployment Team.

- Students who need undergraduate hours may enroll as "MATSIL Diploma" students and receive undergraduate hours for work completed.

- General admission to SBTS. Application forms are available online from www.sbts.edu/admissions. Applicants should have their candidate consultant or immediate supervisor (whichever is appropriate) fill out their Pastoral/Leader Recommendation forms.

Costs

The Southern Baptist Theological Seminary is dedicated to the fulfillment of the Great Commission. As an expression of this dedication, Southern Baptist MATSIL students receive a 50% tuition discount in addition to the tuition discount they may receive as Southern Baptists. Thus, Southern Baptist MATSIL students pay approximately one-quarter of full tuition. Students should understand that they have to pay student enrollment fees and additional fees for online courses. The current fee structure can be found at www.sbts.edu.

Required Courses

*Available online (online courses operate concurrently with the normal semester schedule.)

31980	*Written Communication (if required)◆	(2)
42490	*Cooperative Program	0

Scripture and Interpretation (9 hours)

20190	*Survey of the Old Testament ¹	3
22190	*Survey of the New Testament ²	3
22100	*Biblical Hermeneutics	3

Theology and Tradition (6 hours)

26200	Southern Baptist Heritage	3
27000	*Survey of Systematic Theology ³	3

Great Commission Ministries (9 hours)

30960	*Intercultural Communication <i>or</i>	
33000	Cultural Anthropology ⁴	3
32100	*Personal Evangelism	3
32960	*Introduction to Missiology	3

Electives (24 hours)

30960	*Intercultural Communication	3
32750	History of Christian Missions	3
32860	Biblical Basis of Christian Missions	3
32980	*World Religions & the Christian Faith	3
33000	Cultural Anthropology	3
33010	Communication in Oral Cultures	3
33020	Leadership in Intercultural Contexts	3
33060	Field Seminar in Church Planting ⁵	3
33100	Principles and Practice of Missions ⁶	3
33150	Regional Study in Missions	3
33410	Language Learning for Missionaries ⁷	3
33420	Cultural Acquisition for Missionaries ⁷	3
33477	Studies in Missions	3
33600	Major Living World Religions	3
33820	*Introduction to Church Planting	3
33830	*Cross Cultural Church Planting	3
33840	Church Planting Methodologies	3
33860	Strategic Planning for Church Starts ⁸	3
40080	*Ministry of Leadership	3

Students affiliated with the North American Mission Board must take the following 12 hours as a part of their directed electives:

33060	Field Seminar in Church Planting ⁵	3
33820	*Introduction to Church Planting	3
33840	Church Planting Methodologies	3
33860	Strategic Planning for Church Starts	3

Total Program

Written Communication (if required)	48 ⁹
	+2

◆For Written Communication: See Written Communication Requirement in Academic Section of the SBTS Catalog.

¹Students who wish to gain a more comprehensive knowledge of Old Testament may choose to complete 20200 Introduction to Old Testament I AND 20220 Introduction to Old Testament II (6 hours total). Neither OT I or OT II may be used as a substitute for the survey class.

²Students who wish to gain a more comprehensive knowledge of New Testament may choose to complete 22200 Introduction to New Testament I AND 22220 Introduction to New Testament II (6 hours total). Neither NT I or NT II may be used as a substitute for the survey class.

³Students who wish to gain a more comprehensive knowledge of Systematic Theology may choose to complete 27060 Systematic Theology I, 27070 Systematic Theology II, AND 27080 Systematic Theology III (9 hours total). ST I, ST II, and ST III may not be used individually as a substitute for the survey class.

⁴Of these two courses, the one not applied to Great Commission Ministries may be taken as a Directed Elective.

⁵As a component of this course, IMB students will complete Strategy Coordinator training. NAMB students must be involved in church planting work in North America.

⁶This course is typically offered concurrently with FPO for IMB students who will meet weekly with the professor during the orientation period.

⁷These courses are only available for students beginning the study of a new language and/or the acquisition of a new culture.

⁸Students taking this course must be involved in or beginning their church planting work.

⁹Twenty-four of the student's forty-eight hours MUST be completed on the main campus of The Southern Baptist Theological Seminary in Louisville, Kentucky. This rule is necessary in order to satisfy accreditation requirements.

Intensive Classes

Intensive classes are offered several times a year at the International Learning Centre, often in conjunction with Field Personnel Orientation. Additionally, field intensive classes are offered internationally, allowing the student to attend classes without leaving the field. Survey of Systematic Theology, Southern Baptist Heritage, Survey of the Old Testament, and Survey of the New Testament are offered as field intensives on a rotating basis. For the most current information concerning projected courses, please refer to www.icelonline.com.

Admission, Registration and Fee Payment

The first step into the MATSIL program is admission to The Southern Baptist Theological Seminary. **You should begin the application process with SBTS at least four months prior to your first MATSIL class.** The relevant application materials can be found at www.sbts.edu. Please complete the Master of Arts in Theological Studies application form. If you have any questions concerning admission that are not answered by the FAQ section on the SBTS website, contact admissions@sbts.edu.

If you are presently in the application process with the IMB, your candidate consultant will fill out the Pastor/Leader Recommendation form found in your SBTS application materials. If you are already on the field, your immediate IMB supervisor will fill out the form. IMB Journeymen and ISC personnel must be recommended for the MATSIL program by the IMB's Team Leader for the ISC/Journeyman/Masters Programs.

NAMB personnel must be approved by NAMB's Director of the Missionary Deployment Team. He will also fill out their Pastor/Leader Recommendation form.

Once you are admitted to the seminary, you should start developing a plan for completing your degree. Using the projected schedule on the MATSIL website and the SBTS course catalog, begin deciding when and where you will take each of the required classes.

Once admitted into the seminary as a MATSIL student, a MATSIL special student, or a MATSIL diploma student, you will receive the information necessary to register for

classes, including your user ID and password. You will register and pay for classes using Ecampus (a part of the SBTS website). Complete registration and payment instructions, proper dates for registration, and an FAQ section may be found at the SBTS website. If you have any questions regarding registration and payment that cannot be answered by the material on the SBTS website, please contact academicrecords@sbts.edu.

Special Instructions for International Missionaries

You should download and read the syllabi for the classes below immediately after you have been accepted to the MATSIL program (available at www.icelonline.com).

With these courses, the seminary is not simply granting credit for work done on the field as required by the IMB. However, work and study required by the IMB are included as significant components of the course requirements. The syllabi for these classes clearly spell out the requirements that MUST be met in order to receive credit.

If you cannot meet the requirements found in the syllabus for each course, you will choose other courses from the directed electives category within the MATSIL curriculum. Ultimately, the professor of record will determine whether or not you qualify for these courses.

33420 Cultural Acquisition for Missionaries- You are eligible for this course only if you are beginning to learn a new culture. You must provide matsil@sbts.edu with the information outlined in the syllabus one month prior to the semester in which the class will take place. This class requires that the student read and review one book prior to entering the culture.

33410 Language Learning for Missionaries- You are eligible to take this course only if you are in the process of learning a new language that is required for your work. You must send the information outlined in the syllabus to matsil@sbts.edu at the beginning of your language learning process.

33060 Field Seminar in Church Planting- Typically, the course of study will be related to Strategy Coordinator training provided by the IMB. The requirements for this class begin during the first week of the semester in which you enroll in the class.

Special Instructions for North American Missionaries

The MATSIL program is designed to allow you to take classes while planting churches in North America. Several of your important classes, including 33840 and 33860, are offered on a rotation as intensive classes. You will need to plan to spend a few weeks of the year in Louisville to take these classes. 26200 Southern Baptist Heritage is presently offered as an intensive at the International Learning Centre near Richmond, VA. See www.icelonline.com for more details on this class.